

# Full Contour Incisal Coloring Guide for Anterior



## Step 1

Anterior | Mesial & Distal of Labial

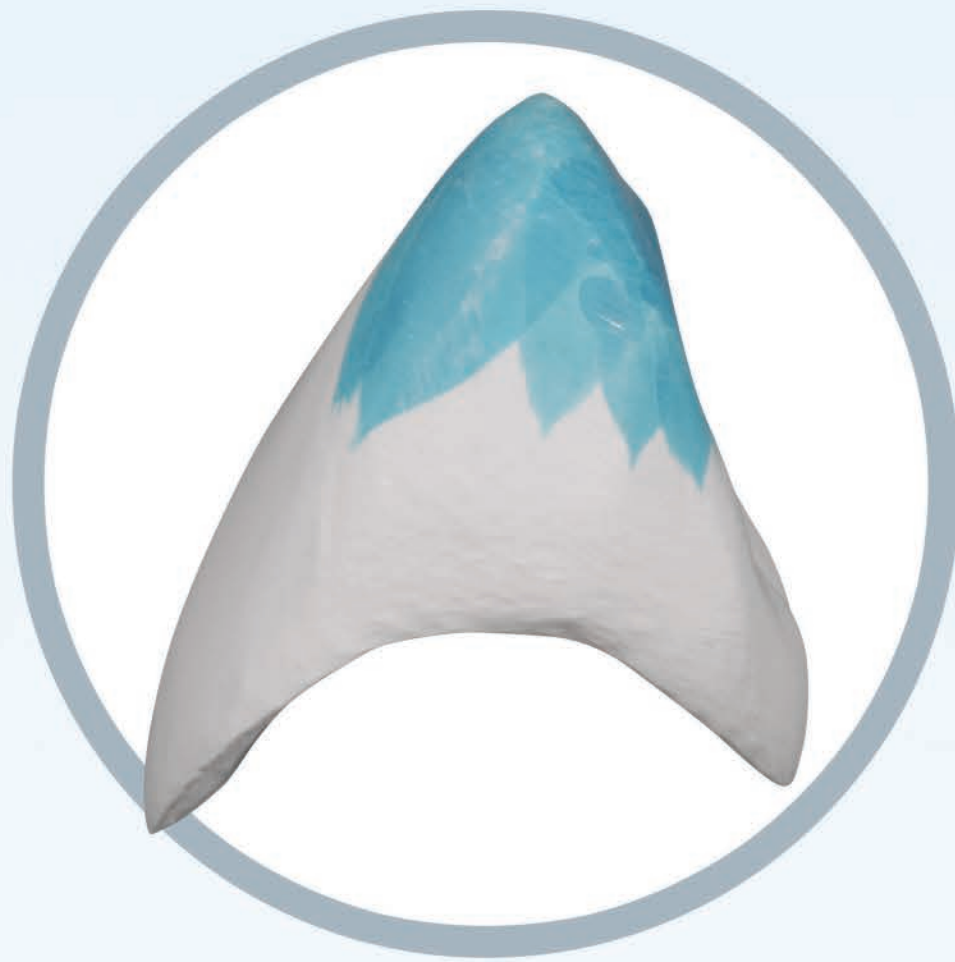
Paint incisal coloring approximately 1/2 way down the mesial and distal labial marginal ridges.



## Step 2

Anterior | Labial

Apply incisal coloring approximately 1/3 down labial in uneven striations.



## Step 3

Anterior | Interproximal

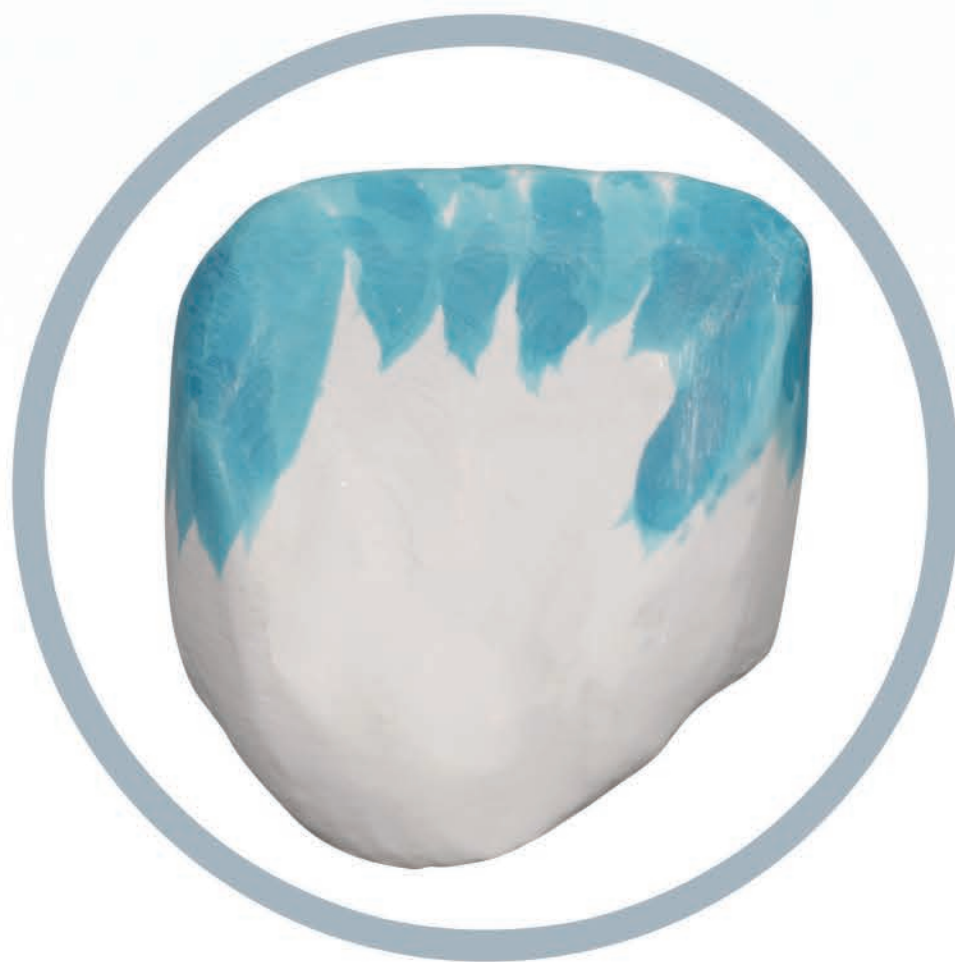
Apply incisal coloring approximately 1/2 down mesial & distal in uneven striations.



## Step 4

Anterior | Lingual Marginal Ridges

Apply incisal coloring approximately 1/2 down lingual marginal ridges.



## Step 5

Anterior | Lingual

Apply incisal coloring approximately 1/3 down lingual in uneven striations.



# Full Contour Incisal Coloring Guide for Posterior



## Step 1

Posterior | Mesial & Distal of Buccal

Paint incisal coloring approximately 1/2 way down the mesial and distal marginal ridges.



## Step 2

Posterior | Buccal

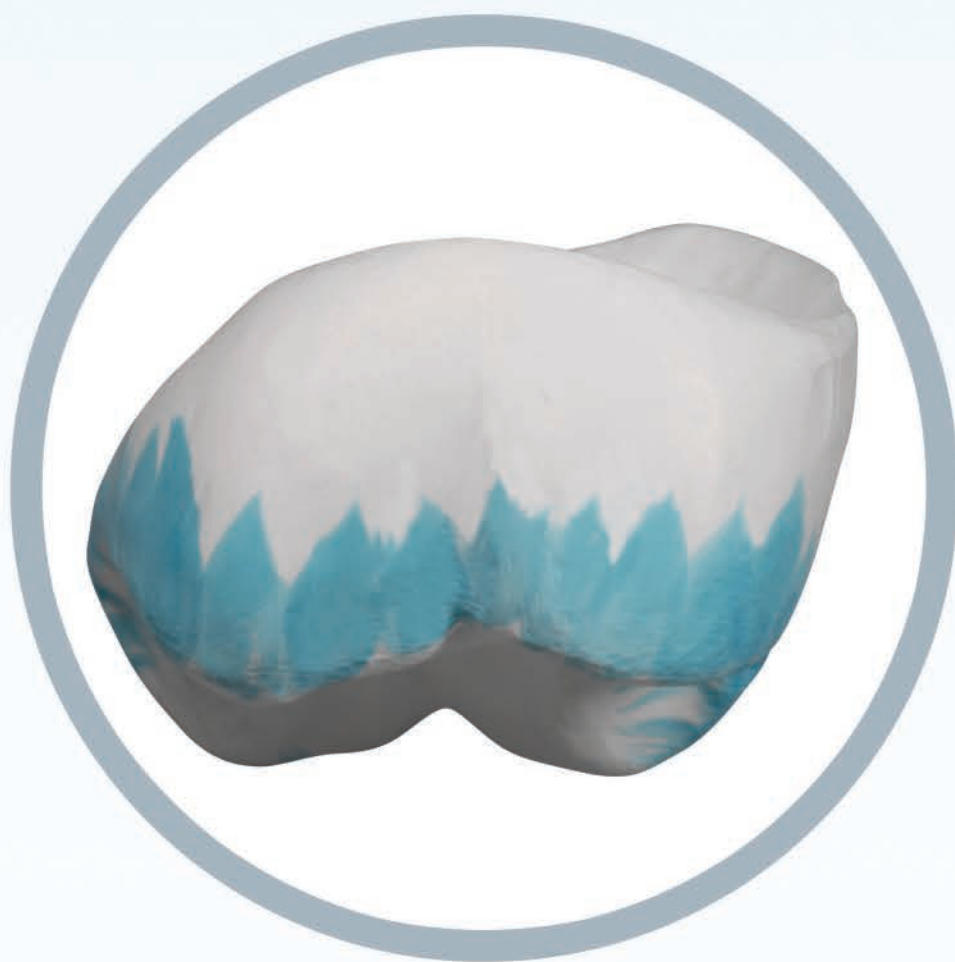
Apply incisal coloring approximately 1/3 down buccal in uneven striations.



## Step 3

Posterior | Interproximal

Apply incisal coloring approximately 1/3 down mesial & distal in uneven striations.



## Step 4

Posterior | Lingual

Apply incisal coloring approximately 1/3 down lingual in uneven striations.



## Step 5

Posterior | Occlusal cusp & Marginal & Triangular Ridges

Apply incisal coloring on all occlusal cusp, marginal & triangular ridges. Avoid occlusal central groove/fossa areas.

