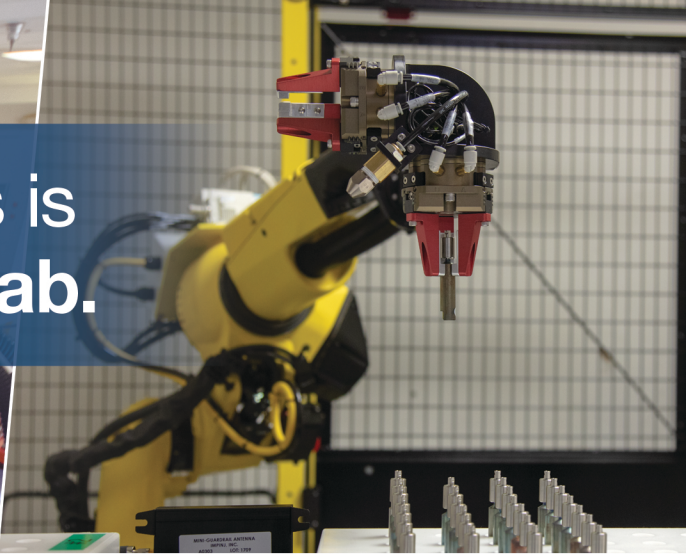


# Every investment Argen makes is an investment in your dental lab.



- **Robotic Automation**

Reliable, predictable results.

- **Advanced Milling Strategies**

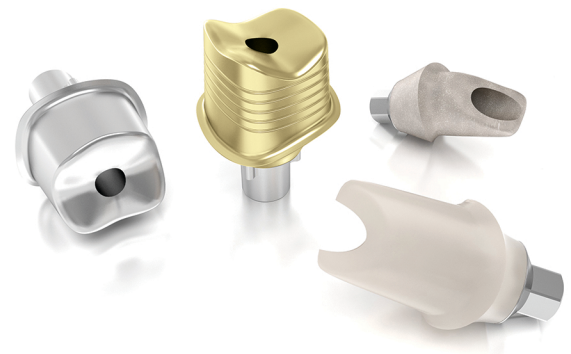
True-to-design margins and finishes.

- **End-to-End Manufacturing**

On-site precision CNC Swiss-screw machining using state-of-the-art technology.

## Quality Custom Abutments From a Partner You Trust

Argen has invested in state-of-the-art manufacturing equipment to ensure the highest quality custom abutments with industry-leading tolerances. Our digital implant solution seamlessly integrates with your lab's digital workflow.



**ARGEN<sup>®</sup> IS**  
Custom Abutments

- > From a company you trust
- > Industry-leading tolerances and quality
- > Compatible with the leading implant platforms

- > FDA 510(k) cleared / ISO 13485
- > Extensive warranty
- > Get a model, analog, and abutment all from Argen

Place your order online at [argen.com](http://argen.com)

Family-Owned | Highest Quality | Made in the USA

[argen.com](http://argen.com) | (800) 255-5524 | #ArgenAwesome

