

# DIGITAL PRODUCTS



Digital made easy.



[argen.com](http://argen.com) | (800) 255-5524



# ARGEN DIGITAL AT A GLANCE

Argen is an extension of your dental lab. Our state-of-the-art manufacturing center produces a high volume of quality products quickly and affordably. You benefit from an end-to-end digital workflow while bypassing cost and time barriers. Argen's comprehensive product selection means you can conveniently source all of your product and service needs through a single trusted partner.

**140,000 sq. ft.**

**Manufacturing  
Facility**

**150**

**Printing &  
Milling Machines**



# TABLE OF CONTENTS

Argen Design Center . . . . . 6

## Argen Fixed

ArgenZ Milled Zirconia . . . . . 8

Selective Laser Melting . . . . . 14

ArgenMill Milled Metals . . . . . 18

Digital Precious Metals . . . . . 22

Digital Models . . . . . 26

Milled Lithium Disilicates . . . . . 28

ArgenPMMA . . . . . 30

ArgenWax . . . . . 32

## Argen Implant Systems

ArgenIS Custom Abutments . . . . . 34

ArgenIS Screw-Retained Bridges . . . . . 38

ArgenIS Milled Bars . . . . . 42

## Argen Removables

Removable Partial Dentures . . . . . 45

Argen Digital Dentures . . . . . 46

## Argen Ortho

Bite Splints . . . . . 48

Clear Aligners . . . . . 50

Scan for Catalogs





“

*Argen's commitment to the quality of their materials and processes is truly second to none! One of the few Lab partners left in the business.* ”

Kevin Kelly, Owner, 5280 Creations Lab



---

**ARGEN**<sup>®</sup>



# MORE OPTIONS. MORE SMILES.

## Milled Units



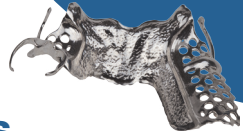
## Resins



## ArgenIS



## Removables



DIGITAL  
SUPPLIES



## Equipment



## Milling Discs

The Argen Corporation  
argen.com | customersuccess@argen.com | (800) 255-5524



# Argen Design Partner

is an extension of your dental lab.

Argen is seamlessly integrated with design companies to help eliminate double entries and file transfer time.

We also have a team of professional and experienced designers available to work with you to dial in your settings and parameters so you get the fit you like every time.

We have built a number of tools to allow you to give us feedback throughout the process so your restoration turns out the way you want it.



## Design Wizard™

Argen has built a best-in-class Design Wizard that allows you to click on easy-to-use pictures for each of your specifications. It's easy, fast, and gives you complete control.



## Design Approval

Our state-of-the-art 3D approval viewer allows you to view your restoration on the model to check every aspect of your design.



## Order Preferences

Argen offers you the ability to set your global order preferences in Order Settings so you never miss a manufacturing cut-off time.



## Case File Download

After we finish designing your restoration, you have the option to download and import your entire design back into your 3Shape system, make adjustments, then complete your manufacturing order, so you can add your own touch to every design.\*

\*ScanBox customers will not be able to make adjustments

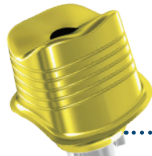


# Designed Together. Manufactured Together. Shipped Together.



## ↓ Crown

Complete your case efficiently in one digital workflow using an ArgenZ™ zirconia crown. Argen manufactures a variety of top-quality zirconia options to meet the esthetic demands of each case.



## ↓ Abutment

Advanced engineering, state-of-the-art manufacturing and our FDA-cleared proprietary manufacturing processes ensure precise, industry-leading tolerances for an optimal fit every time.



## ↓ DIM Analog

The ArgenIS Digital Implant Model (DIM) analog is used in combination with printed models in digital workflows. Consisting of two pieces, this implant analog ensures accurate alignment of its mating parts and is reusable between models of the same system and size.



## ↓ Digital Model

Argen is an industry leader in digital implant models using state-of-the-art technology in 3D printing.

**The Argen Corporation**

argen.com | customersuccess@argen.com | (800) 255-5524







# ArgenZ

## MILLED ZIRCONIA

ArgenZ Milled Zirconia offers extremely accurate cosmetic and restorative solutions in a variety of materials for all zirconia needs. ArgenZ Zirconia is available in High Translucent Plus Multilayer, High Translucent Plus, Super Translucent Multilayer, Anterior Super Translucent, and Ultra High Strength.

HT+ and HT+ Multilayer can be milled in high definition with a 90 degree milling strategy for extraordinary interproximal definition and characterization detail.



---

## ARGEN FIXED



# ARGEN Z<sup>®</sup> HT<sup>+</sup>

## HT+ MULTILAYER

ArgenZ HT+ Multilayer offers unmatched strength and shade accuracy that mirrors the natural gradient of dentin and enamel without layer lines.

Available for milling in high definition.

| TRANSLUCENCY | STRENGTH | MOLE % | INDICATION  | SHADES  | COMPOSITION  |
|--------------|----------|--------|---|---|--|
| 45%          | 1250 MPa | 4Y     | <ul style="list-style-type: none"> <li>Up to 14 units</li> <li>Full contour or frame</li> </ul> | <ul style="list-style-type: none"> <li>16 VITA Classical</li> <li>3 Bleach</li> <li>5 Light</li> <li>Green state</li> </ul> | $ZrO_2+HfO_2+Y_2O_3$ >99 wt%<br>$Y_2O_3$ 6.1-8.2 wt%<br>$HfO_2$ <5 wt%<br>$Al_2O_3$ <0.2 wt% |

\*The "L" or "Light" shades were formulated for implant-retained full-arch restorations. Slightly lighter than their corresponding shade, the light shades provide a more accurate shade match on long-span to full-arch cases.

# ARGEN Z<sup>®</sup> HT<sup>+</sup>

ArgenZ HT+ Zirconia offers extremely accurate, life-like restorations with 4-5% more translucency and 100-150 MPa higher strength over traditional HT zirconia.

Available for milling in high definition.



| TRANSLUCENCY | STRENGTH | MOLE % | INDICATION  | SHADES   | COMPOSITION  |
|--------------|----------|--------|---|--|--|
| 45%          | 1250 MPa | 4Y     | <ul style="list-style-type: none"> <li>Up to 14 units</li> <li>Full contour or frame</li> </ul> | <ul style="list-style-type: none"> <li>16 VITA Classical</li> <li>3 Bleach</li> <li>Green state</li> </ul> | $ZrO_2+HfO_2+Y_2O_3$ >99 wt%<br>$Y_2O_3$ 6.1-8.2 wt%<br>$HfO_2$ <5 wt%<br>$Al_2O_3$ <0.2 wt% |

The Argen Corporation

argen.com | customersuccess@argen.com | (800) 255-5524





# ARGEN Z<sup>®</sup> ST

## STMULTILAYER

ArgenZ ST Multilayer Zirconia features proprietary layer blending technology for natural shade transition. Suitable for single units anywhere in the mouth and up to three unit anterior bridges.

| TRANSLUCENCY  | STRENGTH     | MOLE % | INDICATION  | SHADES   | COMPOSITION  |   |         |                               |              |                                |        |                                |          |                  |          |
|---|--------------|--------|---|--|--|---|---------|-------------------------------|--------------|--------------------------------|--------|--------------------------------|----------|------------------|----------|
| 50%   | 850 MPa      | 5Y     | <ul style="list-style-type: none"> <li>Up to 3-unit anterior bridges</li> <li>Single unit posterior crowns</li> </ul> | <ul style="list-style-type: none"> <li>16 VITA Classical</li> <li>3 Bleach</li> <li>Green state</li> </ul> | <table border="0"> <tr> <td>ZrO<sub>2</sub>+HfO<sub>2</sub>+Y<sub>2</sub>O<sub>3</sub></td> <td>&gt;99 wt%</td> </tr> <tr> <td>Y<sub>2</sub>O<sub>3</sub></td> <td>8.5 - 10 wt%</td> </tr> <tr> <td>Al<sub>2</sub>O<sub>3</sub></td> <td>&lt;5 wt%</td> </tr> <tr> <td>Fe<sub>2</sub>O<sub>3</sub></td> <td>&lt;0.1 wt%</td> </tr> <tr> <td>HfO<sub>2</sub></td> <td>&lt;0.1 wt%</td> </tr> </table> | ZrO <sub>2</sub> +HfO <sub>2</sub> +Y <sub>2</sub> O <sub>3</sub> | >99 wt% | Y <sub>2</sub> O <sub>3</sub> | 8.5 - 10 wt% | Al <sub>2</sub> O <sub>3</sub> | <5 wt% | Fe <sub>2</sub> O <sub>3</sub> | <0.1 wt% | HfO <sub>2</sub> | <0.1 wt% |
| ZrO <sub>2</sub> +HfO <sub>2</sub> +Y <sub>2</sub> O <sub>3</sub> | >99 wt%      |        |   |  |  |   |         |                               |              |                                |        |                                |          |                  |          |
| Y <sub>2</sub> O <sub>3</sub>                                     | 8.5 - 10 wt% |        |   |  |  |   |         |                               |              |                                |        |                                |          |                  |          |
| Al <sub>2</sub> O <sub>3</sub>                                    | <5 wt%       |        |   |  |  |   |         |                               |              |                                |        |                                |          |                  |          |
| Fe <sub>2</sub> O <sub>3</sub>                                    | <0.1 wt%     |        |   |  |  |   |         |                               |              |                                |        |                                |          |                  |          |
| HfO <sub>2</sub>  | <0.1 wt%     |        |   |  |  |   |         |                               |              |                                |        |                                |          |                  |          |

# ARGEN Z<sup>®</sup> ANTERIOR

ArgenZ Anterior Super Translucent Zirconia is an exciting alternative to lithium disilicate offering the highest translucency with optimum strength most closely mimicking the natural dentin of the tooth.



| TRANSLUCENCY  | STRENGTH     | MOLE % | INDICATION  | SHADES   | COMPOSITION  |   |         |                               |              |                                |        |                                |          |                  |          |
|---|--------------|--------|---|--|--|---|---------|-------------------------------|--------------|--------------------------------|--------|--------------------------------|----------|------------------|----------|
| 50%   | 765 MPa      | 5Y     | <ul style="list-style-type: none"> <li>Up to 3-unit anterior bridges</li> <li>Single unit posterior crowns</li> </ul> | <ul style="list-style-type: none"> <li>16 VITA Classical</li> <li>3 Bleach</li> <li>Green state</li> </ul> | <table border="0"> <tr> <td>ZrO<sub>2</sub>+HfO<sub>2</sub>+Y<sub>2</sub>O<sub>3</sub></td> <td>&gt;99 wt%</td> </tr> <tr> <td>Y<sub>2</sub>O<sub>3</sub></td> <td>8.5 - 10 wt%</td> </tr> <tr> <td>Al<sub>2</sub>O<sub>3</sub></td> <td>&lt;5 wt%</td> </tr> <tr> <td>Fe<sub>2</sub>O<sub>3</sub></td> <td>&lt;0.1 wt%</td> </tr> <tr> <td>HfO<sub>2</sub></td> <td>&lt;0.1 wt%</td> </tr> </table> | ZrO <sub>2</sub> +HfO <sub>2</sub> +Y <sub>2</sub> O <sub>3</sub> | >99 wt% | Y <sub>2</sub> O <sub>3</sub> | 8.5 - 10 wt% | Al <sub>2</sub> O <sub>3</sub> | <5 wt% | Fe <sub>2</sub> O <sub>3</sub> | <0.1 wt% | HfO <sub>2</sub> | <0.1 wt% |
| ZrO <sub>2</sub> +HfO <sub>2</sub> +Y <sub>2</sub> O <sub>3</sub> | >99 wt%      |        |   |  |  |   |         |                               |              |                                |        |                                |          |                  |          |
| Y <sub>2</sub> O <sub>3</sub>                                     | 8.5 - 10 wt% |        |   |  |  |   |         |                               |              |                                |        |                                |          |                  |          |
| Al <sub>2</sub> O <sub>3</sub>                                    | <5 wt%       |        |   |  |  |   |         |                               |              |                                |        |                                |          |                  |          |
| Fe <sub>2</sub> O <sub>3</sub>                                    | <0.1 wt%     |        |   |  |  |   |         |                               |              |                                |        |                                |          |                  |          |
| HfO <sub>2</sub>  | <0.1 wt%     |        |   |  |  |   |         |                               |              |                                |        |                                |          |                  |          |

## ARGEN FIXED



“

*Wow! Argen's STML rivals and maybe surpasses the best multilayered zirconia that we've ever used. From the body shade to the incisal translucency, the color and look throughout is natural and very pleasing. Well done Argen. Line up the shade tab, this one is ready to ship!* ”

**Mac Moffat, CAD/CAM Designer and Technician, Moffat Dental Ceramics, Inc.**



**The Argen Corporation**  
 argen.com | customersuccess@argen.com | (800) 255-5524



MKT-18024-Ver10-01/25

# ArgenZ High Definition Milled Zirconia

ArgenZ High Definition Milled Zirconia is milled with a 0.3 mm end mill 90 degree milling strategy that provides a better definition of the interproximal area, greater separation of teeth, and enhanced detail to gingival features.



| TRANSLUCENCY | STRENGTH | MOLE % | INDICATION   | SHADES   | COMPOSITION  |
|--------------|----------|--------|--|--|--|
| 45%          | 1250 MPa | 4Y     | <ul style="list-style-type: none"> <li>Screw retained</li> <li>2-14 units</li> </ul> | <ul style="list-style-type: none"> <li>16 VITA Classical</li> <li>3 Bleach</li> <li>5 Light*</li> <li>Green state</li> </ul> | $ZrO_2+HfO_2+Y_2O_3$ >99 wt%<br>$Y_2O_3$ 6.1 - 8.2 wt%<br>$HfO_2$ <5 wt%<br>$Al_2O_3$ <0.2 wt% |

\*The "L" or "Light" shades are formulated for implant-retained full-arch restorations. Slightly lighter than their corresponding shade, the light shades provide a more accurate shade match on long-span to full-arch cases.



## ARGEN Z<sup>®</sup> ULTRA

ArgenZ Ultra Zirconia's high strength and opaque properties make it optimal for dealing with dark stumps or for use over custom abutments.

| TRANSLUCENCY | STRENGTH | MOLE % | INDICATION   | SHADES   | COMPOSITION   |
|--------------|----------|--------|--|--|---|
| 30%          | 1400 MPa | 3Y     | <ul style="list-style-type: none"> <li>Up to 14 units</li> <li>Frame only</li> </ul> | <ul style="list-style-type: none"> <li>16 VITA Classical</li> <li>3 Bleach</li> <li>Green state</li> </ul> | $ZrO_2$ 90.95%<br>$Y_2O_3$ 4.5 - 6.0%<br>$HfO_2$ ≤5 wt%<br>$Al_2O_3$ ≤0.5 wt% |

## ARGEN FIXED



“ *Having the ability to send larger spans and more challenging ArgenZ High Definition Milled Zirconia designs to Argen frees up my time and mill to focus on smaller cases. I also have the added benefit of knowing that my case is being milled and sintered properly.* ”

**Michel Matosian, CDT**  
**Matosian Dental Lab**

**The Argen Corporation**  
argen.com | customersuccess@argen.com | (800) 255-5524







# SLM

## SELECTIVE LASER MELTING

Argen is one of the only manufacturers in the world to offer SLM substructures in High Noble, Noble and Non-Precious metals.

Argen's Selective Laser Melting (SLM) provides accurate, digitally fabricated crowns and bridges with competitive pricing, quick turnaround, and industry leading customer and technical support.



---

## ARGEN FIXED

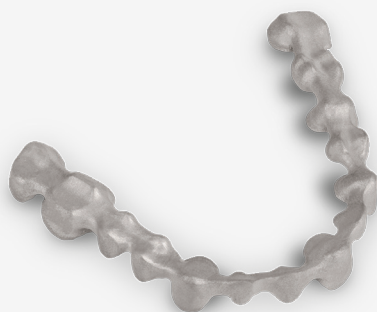


## SLM High Noble<sup>\*</sup>



SLM HN is manufactured from our popular Argdent Euro. The benefits of SLM substructures include better fit, consistent results, and competitive pricing.

| ALLOY               | COMPOSITION |            | INDICATION   | ADA       | COLOR        | PROPERTIES |             |
|---------------------|-------------|------------|--|-----------|--------------|------------|-------------|
| <b>Argdent Euro</b> | Au          | <b>40%</b> | <ul style="list-style-type: none"> <li>• Up to 6 units</li> <li>• PFM</li> </ul> | <b>HN</b> | <b>White</b> | Density    | <b>12.8</b> |
|                     | Pd          | <b>40%</b> |  |           |              | VHN        | <b>260</b>  |
|                     | Ag          | <b>10%</b> |  |           |              |            |             |
|                     | In          | <b>10%</b> |  |           |              |            |             |



## Platinum Plus<sup>®</sup>



Argen's best-selling Platinum Plus<sup>®</sup> is a palladium-free alloy that is strong and ductile, compatible with all porcelains, and suitable for up to 14 units.

| ALLOY                | COMPOSITION |              | INDICATION  | ADA      | COLOR        | PROPERTIES |             | CTE |             |
|----------------------|-------------|--------------|---|----------|--------------|------------|-------------|-----|-------------|
| <b>Platinum Plus</b> | Pt          | <b>20</b>    | <ul style="list-style-type: none"> <li>• Up to 14 units</li> <li>• PFM</li> </ul> | <b>N</b> | <b>White</b> | Density    | <b>9.45</b> | 500 | <b>14.3</b> |
|                      | Ru          | <b>5.7</b>   |   |          |              | VHN        | <b>314</b>  | 600 | <b>14.6</b> |
|                      | Cr          | <b>29.3</b>  |   |          |              |            |             |     |             |
|                      | Co          | <b>43.5</b>  |   |          |              |            |             |     |             |
|                      | Mn          | <b>&lt;1</b> |   |          |              |            |             |     |             |
|                      | Si          | <b>&lt;1</b> |   |          |              |            |             |     |             |

<sup>\*</sup>Available in standard or unfinished.

**The Argen Corporation**

argen.com | customersuccess@argen.com | (800) 255-5524



# SLM Non-Precious\*

SLM NP is manufactured from our NP Premier alloy and indicated for PFM's up to 14 units. Argen's SLM NP saves time and money while delivering consistent results.



| ALLOY             | COMPOSITION |            | INDICATION  | ADA       | COLOR        | PROPERTIES | CTE        |     |             |
|-------------------|-------------|------------|---|-----------|--------------|------------|------------|-----|-------------|
| <b>NP Premier</b> | Co          | <b>61%</b> | <ul style="list-style-type: none"> <li>• Up to 14 units</li> <li>• PFM</li> </ul> | <b>PB</b> | <b>White</b> | Density    | <b>8.6</b> | 500 | <b>14.1</b> |
|                   | Cr          | <b>25%</b> |   |           |              | VHN        | <b>365</b> | 600 | <b>14.5</b> |
|                   | Mo          | <b>6%</b>  |   |           |              |            |            |     |             |
|                   | W           | <b>5%</b>  |   |           |              |            |            |     |             |

# SLM CoCr Bars\*

The SLM Cobalt Chrome Superstructure Bar is digitally manufactured from a high quality CoCr alloy. It can be used in a variety of implant applications.



| ALLOY                | COMPOSITION |            | INDICATION   | ADA       | COLOR        | PROPERTIES | CTE        |     |             |
|----------------------|-------------|------------|--|-----------|--------------|------------|------------|-----|-------------|
| <b>SLM CoCr Bars</b> | Co          | <b>61%</b> | <ul style="list-style-type: none"> <li>• Up to 14 units</li> </ul> | <b>PB</b> | <b>White</b> | Density    | <b>8.6</b> | 500 | <b>14.1</b> |
|                      | Cr          | <b>25%</b> |  |           |              | VHN        | <b>365</b> | 600 | <b>14.5</b> |
|                      | Mo          | <b>6%</b>  |  |           |              |            |            |     |             |
|                      | W           | <b>5%</b>  |  |           |              |            |            |     |             |

\*Available in standard or unfinished.

## ARGEN FIXED





**The Argen Corporation**  
argen.com | customersuccess@argen.com | (800) 255-5524





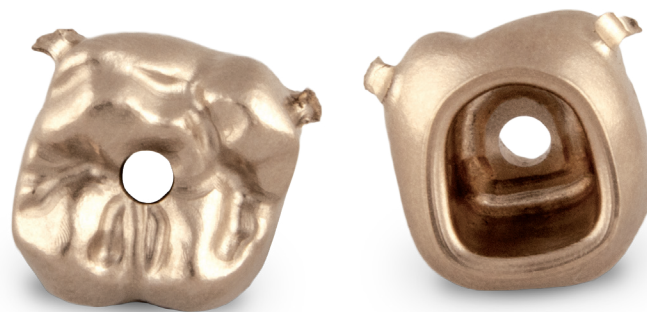


# ArgenMill

## MILLED METAL

ArgenMill Milled Metal crowns and bridges provide you with a digitally fabricated, accurate representation of a file that offers improved fit and consistency over the traditional wax/cast method.

ArgenMill restorations are competitively priced with a quick turnaround time.



*Milled gold crowns are available with or without screw access holes*

---

## ARGEN FIXED

# Milled Gold



## ArgenMill Au58

ArgenMill Au58 is a High Noble, full cast alloy that offers outstanding biocompatibility and a yellow color richer than other high gold options.

| ALLOY             | COMPOSITION |              | INDICATION   | ADA       | COLOR         | PROPERTIES | CTE                |       |
|-------------------|-------------|--------------|--|-----------|---------------|------------|--------------------|-------|
| <b>Argenco 58</b> | Au          | <b>58%</b>   | <ul style="list-style-type: none"> <li>• Up to 6 units</li> <li>• Full Cast</li> </ul> | <b>HN</b> | <b>Yellow</b> | Density    | <b>13.9</b>        | 500 - |
|                   | Ag          | <b>27%</b>   |  |           |               | VHN        | <b>S145 / H210</b> | 600 - |
|                   | Cu          | <b>10.5%</b> |  |           |               |            |                    |       |
|                   | Pd          | <b>3.25%</b> |  |           |               |            |                    |       |

## ArgenMill Au2

ArgenMill Au2 is an economical, full cast Noble alloy with a warm yellow color and multipurpose applications. Not for use with low fusing porcelain.



| ALLOY              | COMPOSITION |              | INDICATION   | ADA      | COLOR         | PROPERTIES | CTE         |       |
|--------------------|-------------|--------------|--|----------|---------------|------------|-------------|-------|
| <b>Argenco Au2</b> | Ag          | <b>34.5%</b> | <ul style="list-style-type: none"> <li>• Up to 6 units</li> <li>• Full Cast</li> </ul> | <b>N</b> | <b>Yellow</b> | Density    | <b>10.4</b> | 500 - |
|                    | Pd          | <b>32.7%</b> |  |          |               | VHN        | <b>175</b>  | 600 - |
|                    | In          | <b>28%</b>   |  |          |               |            |             |       |
|                    | Au          | <b>2.0%</b>  |  |          |               |            |             |       |

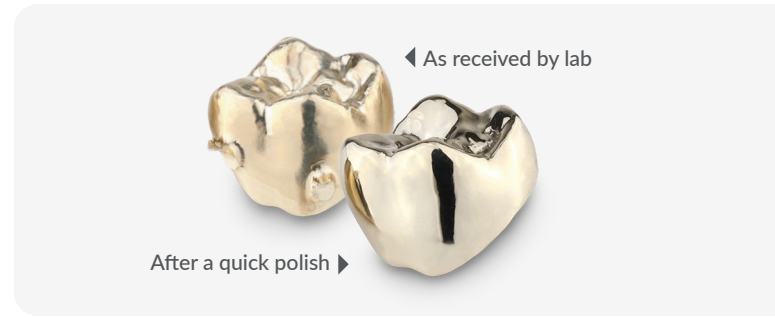
**The Argen Corporation**

argen.com | customersuccess@argen.com | (800) 255-5524



# ArgenMill Au40Y

ArgenMill Au40Y is a cost-effective Noble, full cast alloy with a traditional yellow color. Not for use with low fusing porcelain.



| ALLOY              | COMPOSITION | INDICATION  | ADA      | COLOR         | PROPERTIES      | CTE         |                  |       |
|--------------------|-------------|-------------|----------|---------------|-----------------|-------------|------------------|-------|
| <b>Argenco 40Y</b> | Ag          | <b>46%</b>  | <b>N</b> | <b>Yellow</b> | Density         | <b>12.4</b> | 500 -            |       |
|                    | Au          | <b>40%</b>  |          |               | • Up to 6 Units | VHN         | <b>S125/H215</b> | 600 - |
|                    | Cu          | <b>7.6%</b> |          |               | • Full Cast     |             |                  |       |
|                    | Pd          | <b>4%</b>   |          |               |                 |             |                  |       |

# Milled Cobalt-Chrome



## ArgenMill CoCr

ArgenMill Milled Cobalt-Chrome is highly accurate with a premium 5-axis milling process and requires little to no finishing. Milled cobalt-chrome units include screw-retained bridges, crowns, and bridges.

| ALLOY                 | COMPOSITION | INDICATION     | ADA       | COLOR        | PROPERTIES       | CTE        |                 |                 |
|-----------------------|-------------|----------------|-----------|--------------|------------------|------------|-----------------|-----------------|
| <b>Argen CoCr 275</b> | CO          | <b>66%</b>     | <b>PB</b> | <b>White</b> | Density          | <b>8.4</b> | 500 <b>14.3</b> |                 |
|                       | Cr          | <b>27%</b>     |           |              | • Full Cast      | VHN AF     | <b>255</b>      | 600 <b>14.5</b> |
|                       | Mo          | <b>6%</b>      |           |              | • Frame          |            |                 |                 |
|                       | Si          | <b>&lt; 1%</b> |           |              | • Up to 14 Units |            |                 |                 |
|                       | Fe          | <b>&lt; 1%</b> |           |              |                  |            |                 |                 |
|                       | Mn          | <b>&lt; 1%</b> |           |              |                  |            |                 |                 |

## ARGEN FIXED





**The Argen Corporation**  
argen.com | customersuccess@argen.com | (800) 255-5524





# DPM

# DIGITAL PRECIOUS METALS

Argen's Digital Precious Metals (DPM) deliver a wide range of our most popular High Noble and Noble alloy compositions through the digital workflow. This CAD/Cast process saves you time and money with quick turnaround times.



---

## ARGEN FIXED

# PFM High Noble

| PRODUCT     | ALLOY              | COMPOSITION         | INDICATION                   | ADA  | COLOR  | PROPERTIES   | CTE                     |                         |                         |                      |
|-------------|--------------------|---------------------|------------------------------|--|--|--|-------------------------|-------------------------|-------------------------|----------------------|
| DPM AD880PF | Argident Bio 880PF | Au 88%<br>Fe <1%    | Pt 9.5%<br>Ag <1%<br>In 1.5% | <ul style="list-style-type: none"> <li>Up to 6 units</li> <li>PFM</li> </ul> | HN   | Rich Yellow  | Density VHN<br>19 175   | 500 14.2<br>600 14.4    |                         |                      |
| DPM ADY73   | Argident Y73       | Au 73.8%<br>In 1.9% | Pt 8.5%<br>Fe <1%            | Ag 5.4%<br>Mn <1%  | Ag 9%<br>Nb <1%  | <ul style="list-style-type: none"> <li>Up to 6 units</li> <li>PFM</li> </ul> | HN                      | Rich Yellow             | Density VHN<br>16.7 215 | 500 14.3<br>600 14.5 |
| DPM AD54    | Argident 54        | Au 54.2%<br>Ga <1%  | Pd 31%<br>Ag 4.8%            | In 9%  | <ul style="list-style-type: none"> <li>Up to 6 units</li> <li>PFM</li> </ul> | HN   | White                   | Density VHN<br>14.3 280 | 500 14.3<br>600 14.5    |                      |
| DPM Olympia | Olympia            | Au 51.5%<br>Ga 1.5% | Pd 38.4%<br>In 8.5%          | <ul style="list-style-type: none"> <li>Up to 6 units</li> <li>PFM</li> </ul> | HN   | White  | Density VHN<br>14.4 250 | 500 13.8<br>600 14.1    |                         |                      |
| DPM Euro    | Argident Euro      | Au 40%<br>In 8.8%   | Pd 39.4%<br>Ga 1.4%          | Ag 10%<br>Sn <1%   | <ul style="list-style-type: none"> <li>Up to 6 units</li> <li>PFM</li> </ul> | HN   | White                   | Density VHN<br>12.8 260 | 500 14.1<br>600 14.4    |                      |

# PFM Noble

| PRODUCT     | ALLOY           | COMPOSITION         | INDICATION          | ADA              | COLOR  | PROPERTIES | CTE   |                         |                      |
|-------------|-----------------|---------------------|---------------------|------------------|--|------------|-------|-------------------------|----------------------|
| DPM AL76SF+ | Argelite 76 SF+ | Au 1.8%<br>Ga 6.3%  | Pd 75.7%<br>Sn <1%  | Cu 7.5%<br>In 8% | <ul style="list-style-type: none"> <li>Up to 6 units</li> <li>PFM</li> </ul> | N          | White | Density VHN<br>11.2 290 | 500 14.1<br>600 14.3 |
| DPM AL71    | Argelite 71     | Pd 70.9%<br>In 8%   | Ag 10%<br>Ga <1%    | Zn 5%<br>Sn 5.3% | <ul style="list-style-type: none"> <li>Up to 6 units</li> <li>PFM</li> </ul> | N          | White | Density VHN<br>10.6 300 | 500 14.2<br>600 14.5 |
| DPM AL70+   | Argelite 70+    | Au 3%<br>Sn 9.8%    | Pd 70%<br>In 2%     | Ag 9.5%<br>Zn 5% | <ul style="list-style-type: none"> <li>Up to 6 units</li> <li>PFM</li> </ul> | N          | White | Density VHN<br>10.7 260 | 500 14.1<br>600 14.4 |
| DPM AL61+3  | Argelite 61+3   | Au 3%<br>In 10%     | Pd 61%<br>Ga 2.5%   | Ag 23.4%         | <ul style="list-style-type: none"> <li>Up to 6 units</li> <li>PFM</li> </ul> | N          | White | Density VHN<br>11.3 260 | 500 14.5<br>600 14.8 |
| DPM AL61    | Argelite 61     | Pd 60.6%<br>Ga 2.1% | Ag 28.1%<br>Sn 2.5% | In 6.6%          | <ul style="list-style-type: none"> <li>Up to 6 units</li> <li>PFM</li> </ul> | N          | White | Density VHN<br>11.2 275 | 500 14.4<br>600 14.7 |
| DPM AL58P   | Argelite 58P    | Pd 57.9%<br>In 4%   | Ag 30%<br>Zn 2%     | Sn 6%            | <ul style="list-style-type: none"> <li>Up to 6 units</li> <li>PFM</li> </ul> | N          | White | Density VHN<br>11.3 250 | 500 14.7<br>600 14.9 |
| DPM PTPLUS  | PTPLUS          | Pt 20%<br>Co43.5%   | Ru5.7%<br>Mn<1%     | Cr29.3%<br>Si<1% | <ul style="list-style-type: none"> <li>Up to 6 units</li> <li>PFM</li> </ul> | N          | White | Density VHN<br>9.45 314 | 500 14.3<br>600 14.6 |
| DPM NCNF    | NobleCrown NF   | Pd 25%<br>B <1%     | Co 42.8%<br>Cr 20%  | Mo 12%           | <ul style="list-style-type: none"> <li>Up to 6 units</li> <li>PFM</li> </ul> | N          | White | Density VHN<br>9.2 225  | 500 14.4<br>600 14.8 |
| DPM Nbond   | NobleBond       | Ru 25%<br>B <1%     | Co 40%<br>Cr 24%    | Ga 11%           | <ul style="list-style-type: none"> <li>Up to 6 units</li> <li>PFM</li> </ul> | N          | White | Density VHN<br>9.0 500  | 500 13.8<br>600 14.3 |

The Argen Corporation

argen.com | customersuccess@argen.com | (800) 255-5524





# Full Cast High Noble

| PRODUCT  | ALLOY      | COMPOSITION                                       | INDICATION   | ADA | COLOR  | PROPERTIES                                  | CTE            |
|----------|------------|---|--|-----|--------|---|----------------|
| DPM AG75 | Argenco 75 | Au 74.5% Pd 3.5% Ag 11%<br>Cu 10.45% Zn <1%       | <ul style="list-style-type: none"> <li>Up to 6 units</li> <li>Full Cast</li> </ul> | HN  | Yellow | Density VHN <b>15.5</b><br><b>S121/H182</b> | 500 -<br>600 - |
| DPM AG62 | Argenco 62 | Au 62% Pd 1% Ag 26.5%<br>Cu 8.95% Zn 1.5%         | <ul style="list-style-type: none"> <li>Up to 6 units</li> <li>Full Cast</li> </ul> | HN  | Yellow | Density VHN <b>14.2</b><br><b>S130/H220</b> | 500 -<br>600 - |
| DPM AG56 | Argenco 56 | Au 55.8% Pd 4.11% Ag 25%<br>Cu 13.8% Zn 1% In <1% | <ul style="list-style-type: none"> <li>Up to 6 units</li> <li>Full Cast</li> </ul> | HN  | Yellow | Density VHN <b>13.6</b><br><b>S186/H254</b> | 500 -<br>600 - |
| DPM AG58 | Argenco 58 | Au 58% Pd 3.3% Ag 27%<br>Cu 10.5% Zn 1% In <1%    | <ul style="list-style-type: none"> <li>Up to 6 units</li> <li>Full Cast</li> </ul> | HN  | Yellow | Density VHN <b>13.9</b><br><b>S145/H210</b> | 500 -<br>600 - |

# Full Cast Noble

| PRODUCT   | ALLOY       | COMPOSITION                            | INDICATION   | ADA | COLOR  | PROPERTIES                                  | CTE            |
|-----------|-------------|--|--|-----|--------|---|----------------|
| DPM AG46  | Argenco 46  | Au 46% Pd 6% Ag 39.5%<br>Cu 7.5% Zn 1% | <ul style="list-style-type: none"> <li>Up to 6 units</li> <li>Full Cast</li> </ul> | N   | Yellow | Density VHN <b>12.7</b><br><b>S135/H230</b> | 500 -<br>600 - |
| DPM AG40Y | Argenco 40Y | Ag 46% Au 40% Pd 4%<br>Cu 7.6%         | <ul style="list-style-type: none"> <li>Up to 6 units</li> <li>Full Cast</li> </ul> | N   | Yellow | Density VHN <b>12.4</b><br><b>S125/H215</b> | 500 -<br>600 - |
| DPM Y+    | Argenco Y+  | Au 2% Pd 34.9% Ag 30% Zn 3%<br>In 30%  | <ul style="list-style-type: none"> <li>Up to 3 units</li> <li>Full Cast</li> </ul> | N   | Yellow | Density VHN <b>10.5</b><br><b>S180</b>      | 500 -<br>600 - |
| DPM AGW   | Argenco W   | Pd 25% Ag 70% In 3% Zn 2%<br>Ir <0.1%  | <ul style="list-style-type: none"> <li>Up to 6 units</li> <li>Full Cast</li> </ul> | N   | White  | Density VHN <b>10.5</b><br><b>S145/H155</b> | 500 -<br>600 - |

# Full Cast Non-Precious

| PRODUCT        | ALLOY              | COMPOSITION                                      | INDICATION   | ADA | COLOR | PROPERTIES                                  | CTE                                |
|----------------|--------------------|--|--|-----|-------|---|------------------------------------|
| DPM W-LITE     | Argenco W-LITE     | Pd 20% Ag 75% Zn 2% In 3%                        | <ul style="list-style-type: none"> <li>Up to 6 units</li> <li>Full Cast</li> </ul> | PB  | White | Density VHN <b>10.5</b><br><b>S135/H155</b> | 500 -<br>600 -                     |
| DPM NP Supreme | Argeloy NP Supreme | Co 61% Mo 6% Cr 27% W 5%<br>Mn <1% Fe <1% Si <1% | <ul style="list-style-type: none"> <li>Up to 6 units</li> <li>Full Cast</li> </ul> | PB  | White | Density VHN <b>8.6</b><br><b>365</b>        | 500 <b>14.1</b><br>600 <b>14.5</b> |

## ARGEN FIXED





**The Argen Corporation**  
argen.com | customersuccess@argen.com | (800) 255-5524





Argen's 3D printed digital models provide a precise and accurate model from an intraoral scan. Streamline your operations using digital models as an individual order or as part of a complete workflow from scan to restoration. Two materials types are available: Model C and Model T.



*Available with soft tissue.*

---

## ARGEN FIXED

# Model C

Model C uses digital light projection technology to produce models with a smooth, accurate surface.

## INDICATION

- Single die
- Quad
- Full arch

## OPTIONAL

- With soft tissue



# Model T

Model T uses multi-jet printing to produce models with a traditional, stone-like look and feel.

## INDICATION

- Single die
- Quad
- Full arch

## OPTIONAL

- With soft tissue



## The Argen Corporation

argen.com | customersuccess@argen.com | (800) 255-5524







# MILLED LITHIUM DISILICATE

Argen-milled IPS e.max units offer life-like esthetics suitable for a wide range of indications.



---

## ARGEN FIXED





# Milled IPS e.max<sup>®</sup> CAD

Lab receives unit in blue state, uncrySTALLIZED.


| TRANSLUCENCY LEVEL | SHADES  | INDICATIONS       |
|--------------------|---|-------------------|
| <b>HT</b>          | A1, A2, A3, A3.5, A4, B1, B2, B3, B4,<br>BL1, BL2, BL3, BL4, C1, C2, C3, C4, D2, D3, D4 | Single Units Only |
| <b>LT</b>          | A1, A2, A3, A3.5, A4, B1, B2, B3, B4,<br>BL1, BL2, BL3, BL4, C1, C2, C3, C4, D2, D3, D4 | Single Units Only |
| <b>MT</b>          | A1, A2, A3, B1, BL2, BL3, BL4   | Single Units Only |
| <b>MO</b>          | 0, 1, 2, 3, 4   | Single Units Only |

Copyright © 2024 The Argen Corporation. All Rights Reserved.  
IPS e.max is a trademark of Ivoclar Vivadent, Inc.

**The Argen Corporation**  
argen.com | customersuccess@argen.com | (800) 255-5524



MKT-18024-Ver10-01/25



# ArgenPMMA

## PMMA TEMPORARIES

ArgenPMMA units offer a high quality esthetic temporary solution, are quick and easy to polish, and can be stained and layered for maximum results.



---

## ARGEN FIXED



# ArgenPMMA Monochromatic Units

ArgenPMMA is used as a temporary material while a permanent restoration is created. ArgenPMMA is quick and easy to polish.

## INDICATION

- Up to 14 units
- Full contour

## SHADES

- 16 VITA Classical
- Bleach

# ArgenPMMA Multilayer Units

ArgenPMMA Multilayer units are available in a wide selection of shades and sizes to meet your lab's needs.

## INDICATION

- Up to 14 units
- Full contour

## SHADES

- 16 VITA Classical
- Bleach



**The Argen Corporation**

argen.com | customersuccess@argen.com | (800) 255-5524







# ArgenWAX

## WAX / RESIN HYBRID

Our versatile digital wax/plastic hybrid material is perfectly suited for many products, including pressing all-ceramic full contour crowns, full gold casting, and wax tops for pressed to metal or pressed to zirconia.

ArgenWAX offers an extremely accurate representation of single and bridge units.



---

## ARGEN FIXED



## ArgenWAX Printed

3D-printed ArgenWAX is made from a wax/resin hybrid providing significant accuracy with detailed anatomy. Printed ArgenWax is best suited for long span bridges but can be used for many other products.

### INDICATION

- Up to 14 units
- Full contour or frame

### COLOR

**Green**

## ArgenWAX Milled

Milled ArgenWAX is made from a versatile digital wax material that is easy to modify and provides remarkable accuracy with a wide range of margin options.

### INDICATION

- Up to 14 units
- Full contour or frame

### COLOR

**Grey**



## ArgenWAX Carvable

Carvable ArgenWAX is a true wax with no resin components. This wax is easier to modify and make changes to primary and secondary anatomy compared with standard grey milled wax.

### INDICATION

- Up to 14 units
- Full contour or frame

### COLOR

**Beige**



**The Argen Corporation**

argen.com | customersuccess@argen.com | (800) 255-5524





# ArgenIS IMPLANT SYSTEMS

Argen's custom abutments and screws are OEM-equivalent; they function comparably to OEM (Original Equipment Manufacturer) parts. They are 5-axis precision milled for the highest quality units. No finishing or polishing is required.

ArgenIS Implant Systems are compatible with 16 of the leading implant systems, FDA-cleared, and backed by a warranty that covers both the abutment and the implant.

ArgenIS system includes digitally manufactured products as well as lab analogs, abutment screws, multi-unit abutments, Ti bases, and digital impression model (DIM) analogs to support leading implant systems. All lab analogs are stainless steel. Abutment screws come with recommended screw torque setting per compatible system.



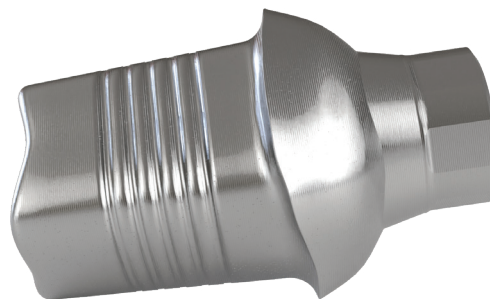
---

## ARGEN IMPLANT SYSTEMS



# OEM Original Nobel Biocare™ Custom Abutments

Nobel Biocare™\* OEM Custom Abutments use genuine Nobel Biocare™ OEM components and are milled through Argen's automated manufacturing. These abutments allow labs to streamline workflows when bundled with Argen's other restorative products. Outsourcing to Argen saves time and reduces overhead, all backed by warranties from both Argen and Nobel Biocare™.

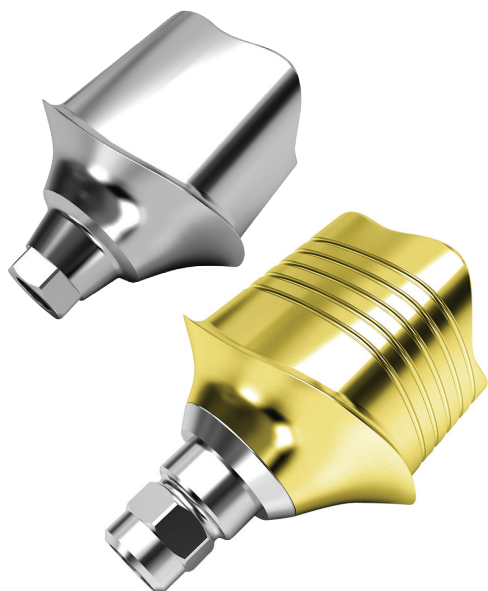


| MATERIAL | UNITS  | OPTIONAL  | INCLUDES      |
|----------|--------|---|---------------|
| Titanium | Single | <ul style="list-style-type: none"> <li>Retention grooves</li> <li>Gold anodization</li> </ul> | 1 final screw |

\*Nobel Biocare™ is a trademark of Nobel Biocare Services AG.

## Titanium Custom Abutment

ArgenIS Titanium Custom Abutments are cement-retained and FDA-cleared with Argen's proprietary manufacturing process, ensuring precise and industry leading tolerances, and a perfect fit everytime.



| MATERIAL | UNITS  | OPTIONAL  | INCLUDES       |
|----------|--------|---|----------------|
| Titanium | Single | <ul style="list-style-type: none"> <li>Retention grooves</li> <li>Gold anodization</li> </ul> | 2 final screws |

The Argen Corporation  
 argen.com | customersuccess@argen.com | (800) 255-5524





## Zirconia Hybrid Custom Abutment

ArgenIS Zirconia Hybrid Custom Abutments are cement-retained restorations made with ArgenZ HT+ Multilayer, HT+, or Ultra Zirconia.

| TOP MATERIAL                   | UNITS  | INCLUDES               | TI BASE OPTIONS   |
|--------------------------------|--------|------------------------|---|
| HT+ Multilayer<br>HT+<br>Ultra | Single | Final screw<br>Ti Base | <ul style="list-style-type: none"> <li>• Gold-anodized base</li> <li>• Engaging or non-engaging</li> <li>• Multiple gingival heights</li> </ul> |

Top can be ordered separately.

## Screw-Retained FC Hybrid Custom Abutment

ArgenIS Screw-Retained Full Contour Custom Hybrids are topped with ArgenZ HT+ Multilayer or HT+.

| TOP MATERIAL          | UNITS  | INCLUDES               | TI BASE OPTIONS   |
|-----------------------|--------|------------------------|---|
| HT+ Multilayer<br>HT+ | Single | Final screw<br>Ti Base | <ul style="list-style-type: none"> <li>• Gold-anodized base</li> <li>• Engaging or non-engaging</li> <li>• Multiple gingival heights</li> </ul> |

Top can be ordered separately.



## ARGEN IMPLANT SYSTEMS

# Angled Screw Channel Hybrid Custom Abutment

ArgenIS Angled Screw Channel Abutments offer the ability to place the access hole anywhere between 0° to 25° with 360° freedom.

| TOP MATERIAL                             | UNITS  | INCLUDES               | TI BASE OPTIONS  |
|--|--------|------------------------|--|
| HT+ Multilayer<br>HT+<br>SLM NP<br>Ultra | Single | Final screw<br>Ti Base | <ul style="list-style-type: none"> <li>Engaging or non-engaging</li> </ul> |

Top can be ordered separately.



# Screw-Retained SLM Hybrid Custom Abutment

ArgenIS Screw-Retained SLM Custom Hybrids offer a non-precious PFM top with universal porcelain compatibilities.

| TOP MATERIAL | UNITS  | INCLUDES               | TI BASE OPTIONS   |
|--------------|--------|------------------------|---|
| NP Premier   | Single | Final screw<br>Ti Base | <ul style="list-style-type: none"> <li>Gold-anodized base</li> <li>Engaging or non-engaging</li> <li>Multiple gingival heights</li> </ul> |

Top can be ordered separately.

**The Argen Corporation**  
argen.com | customersuccess@argen.com | (800) 255-5524







# ArgenIS

## SCREW-RETAINED BRIDGES

ArgenIS Screw-Retained Bridges are available for 2–14 units with or without gingival anatomy and with or without the ArgenIS multi-unit abutment set.

A screw-retained bridge can be made with any third-party implant parts and are available in a variety of materials and shades. Argen uses high-definition 5-axis milling strategies and small end mills for precise detail.



*Available with or without  
ArgenIS multi-unit abutment set.*

---

## ARGEN IMPLANT SYSTEMS

## ArgenIS Screw-Retained Zirconia Bridge



| TOP MATERIAL   | UNITS | MULTI-UNIT ABUTMENT AND TI BASE OPTIONS   |
|----------------|-------|---|
| HT+ Multilayer | 2-14  | <ul style="list-style-type: none"> <li>• Straight and angled abutments</li> </ul>               |
| HT+            |       | <ul style="list-style-type: none"> <li>• Multiple gingival heights</li> </ul>                   |
| Ultra          |       | <ul style="list-style-type: none"> <li>• Multiple chimney heights</li> <li>• RP size</li> </ul> |

## ArgenIS Screw-Retained PMMA Bridge

| TOP MATERIAL | UNITS | MULTI-UNIT ABUTMENT AND TI BASE OPTIONS  |
|--------------|-------|--|
| PMMA         | 2-14  | <ul style="list-style-type: none"> <li>• Straight and angled abutments</li> </ul>  |
| PMMA Multi   |       | <ul style="list-style-type: none"> <li>• Multiple gingival heights</li> <li>• Multiple chimney heights</li> <li>• RP size</li> </ul> |



### The Argen Corporation

argen.com | customersuccess@argen.com | (800) 255-5524



## ArgenIS Screw-Retained SLM NP Bridge



| TOP MATERIAL | UNITS | MULTI-UNIT ABUTMENT AND TI BASE OPTIONS  |
|--------------|-------|--|
| NP Premier   | 2-14  | <ul style="list-style-type: none"><li>• Straight and angled abutments</li><li>• Multiple gingival heights</li><li>• Multiple chimney heights</li><li>• RP and WP sizes</li></ul> |

## ArgenIS Screw-Retained CoCr Bridge

| TOP MATERIAL  | UNITS | MULTI-UNIT ABUTMENT AND TI BASE OPTIONS  |
|---------------|-------|--|
| ArgenCoCr 275 | 2-14  | <ul style="list-style-type: none"><li>• Straight and angled abutments</li><li>• Multiple gingival heights</li><li>• Multiple chimney heights</li><li>• RP and WP sizes</li></ul> |



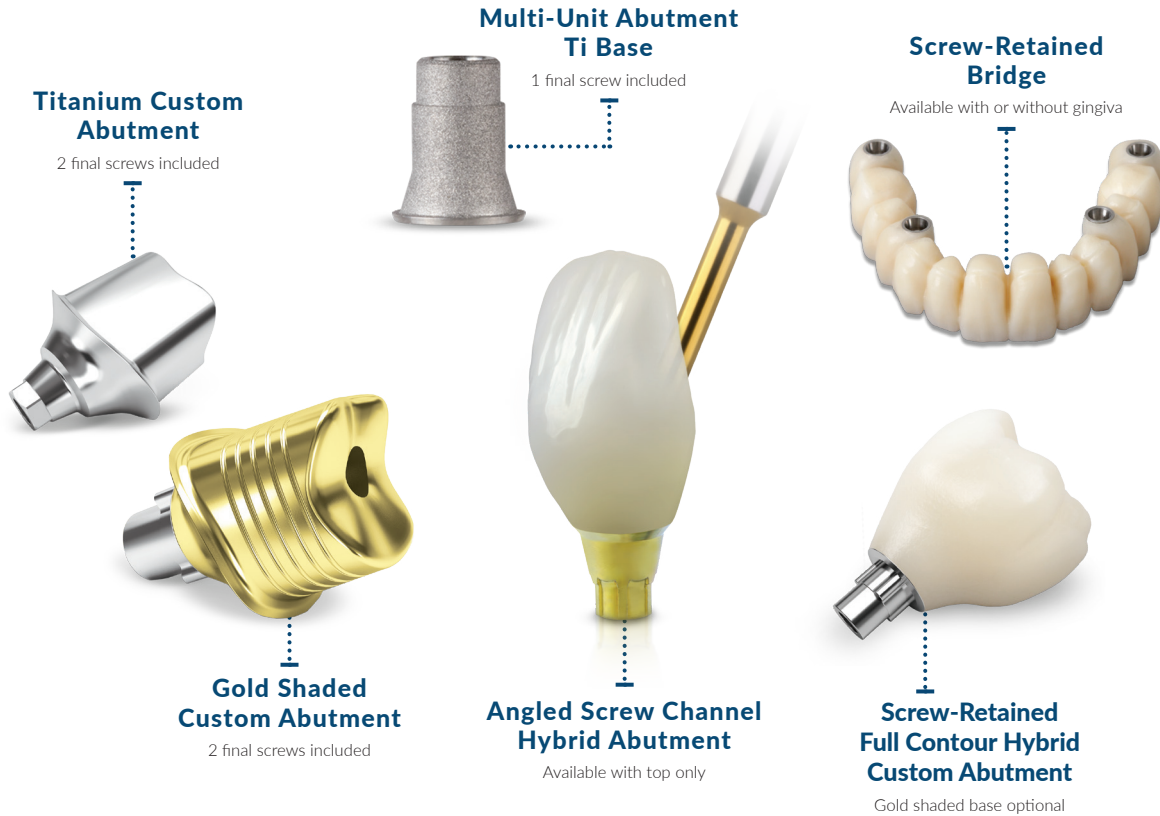
# ARGEN IMPLANT SYSTEMS



# ArgenIS

## Product Offering

Argen gives you the flexibility to scan and design your own abutment and submit your design file to argen.com for precision milling by our professional CAD/CAM engineers. Our custom abutments are milled with a 5-axis precision mill for the highest quality units, with no finishing or polishing required.



| Custom Abutment Type                                  | Order Cut-Off Time   | Turnaround Time  |
|---|----------------------|--|
| Hybrid, Angled Screw Channel, Multi-Unit Zirconia     | 12 pm PST (3 pm EST) | 2 Business Days<br><i>Zirconia bridges need 1 additional day for sintering</i> |
| Hybrid, Angled Screw Channel, Multi-Unit Non-Zirconia | 3 pm PST (6 pm EST)  | 2 Business Days  |
| Titanium Abutments                                    | 3 pm PST (6 pm EST)  | 2 Business Days  |
| Titanium, CoCr Bars                                   | 3 pm PST (6 pm EST)  | 2 Business Days  |

**The Argen Corporation**  
 argen.com | customersuccess@argen.com | (800) 255-5524



# ArgenIS

## MILLED BARS



ArgenIS Milled Cobalt-Chrome and Titanium Bars are for use in both fixed and removable cases at the abutment level. These bars are milled from Grade 23 titanium and Argen CoCr 255 with industrial precision 5-axis milling machines. Cobalt-chrome and titanium bars are compatible with most multi-units. Titanium Bars can be received either polished or unpolished. They can also be anodized.



### ArgenIS Hader Bar

- Removable
- Direct to multi-unit abutments
- Polished finish

---

## ARGEN IMPLANT SYSTEMS



## ArgenIS Dolder Bar

- Removable
- Direct to multi-unit abutments
- Polished finish

## ArgenIS Attachment Bar

- Removable
- Direct to multi-unit abutments
- Screw hole size 2.0 mm for various attachment applications including LOCATOR® and ball attachments
- Polished finish



## ArgenIS Wraparound Bar

- Fixed
- Direct to multi-unit abutments
- Allows for relining if there is resorption of the bone or inaccurate impression
- Machine polish

## ArgenIS Montreal Bar

- Fixed
- Direct to multi-unit abutments
- Polished finish intaglio surface recommended



## ArgenIS Thimble Bar

- Fixed
- Direct to multi-unit abutments
- Polished finish intaglio surface recommended

The Argen Corporation

argen.com | customersuccess@argen.com | (800) 255-5524







# Argen Removables

## DIGITAL DENTURES

Argen Removables are printed full-arch and partial denture solutions with a streamlined and efficient digital workflow. Partial dentures are printed with selective laser melting and made from a uniquely formulated blend that's more accurate and ductile. The removable full-arch and try-in dentures are printed using advanced 3D printing technology and FDA-cleared materials. The CAD/CAM process creates true-to-impression quality restorations that improve accuracy for a better fit.

Argen offers easy file upload and quick turnaround times for accelerated production.



---

## ARGEN REMOVABLES

# SLM RPD Frames

Argen SLM RPD Frames are made with a uniquely formulated blend that is more accurate and ductile than traditional casting. Our proprietary post processing methods also ensure a precise fit every time. Available as Polished (standard) or Unfinished.



| ALLOY                  | COMPOSITION | INDICATION    | ADA                   | COLOR        | PROPERTIES |            |
|------------------------|-------------|---------------|-----------------------|--------------|------------|------------|
| <b>Argeloy Partial</b> | Co          | <b>64%</b>    | • Upper               | <b>White</b> | Density    | <b>8.3</b> |
|                        | Cr          | <b>28%</b>    |                       |              | • Lower    | VHN        |
|                        | Mo          | <b>6%</b>     | Tensile Strength Hard |              | <b>752</b> |            |
|                        | Mn          | <b>&lt;1%</b> | Elongation Hard       |              | <b>10</b>  |            |
|                        | Fe          | <b>&lt;1%</b> | Elastic Modulus GPa   |              | <b>228</b> |            |
|                        | Si          | <b>&lt;1%</b> |                       |              |            |            |
|                        | C           | <b>&lt;1%</b> |                       |              |            |            |

# Lucitone Assembled Denture

Lucitone Assembled Denture is made from high-impact resin that exceeds ISO standards for impact resistance, delivering outstanding durability and strength. Each Lucitone Assembled Denture includes a printed pink base and printed tooth shade arch that has been assembled, surface treated, and UV cured. The denture can be received polished or unpolished.

## PINK BASE SHADES

- L – Light
- LRP – Light Reddish Pink
- O – Original
- OO – Original Opaque
- DRP – Dark Reddish Pink

## TOOTH SHADES

- A1 A2 A3
- B1 B2
- C1
- D2
- BL1 BL3



# Lucitone Try-In Denture

Lucitone Try-In Dentures are made from a material that has superior durability and wear resistance. Lucitone Try-In Dentures are printed tooth material in a one piece, monolithic denture. May require polishing at the lab.

## COLOR

- A1 A2 A3
- B1 B2
- BL3

# ARGEN REMOVABLES



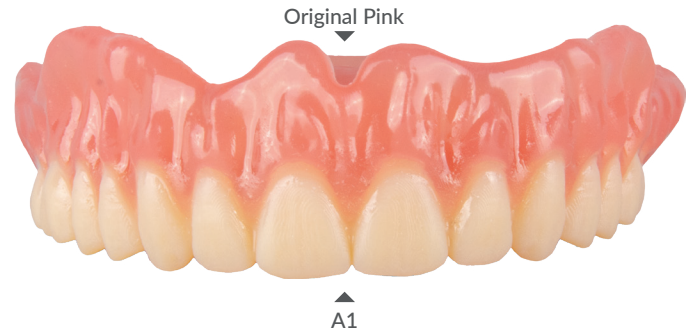
# Basic Assembled Denture

Each Basic Assembled Denture includes a printed pink base and printed tooth shade arch that has been assembled, surface treated, and UV cured. The denture will need to be polished and high-shined at the lab.

## PINK BASE SHADES

- OP – Original Pink
- DP – Dark Pink
- LP – Light Pink
- RP – Reddish Pink

## TOOTH SHADES



# Basic Try-In Denture

Basic Try-In Dentures are printed as a one-piece monolithic denture.

## COLOR

- White

The Argen Corporation

argen.com | customersuccess@argen.com | (800) 255-5524



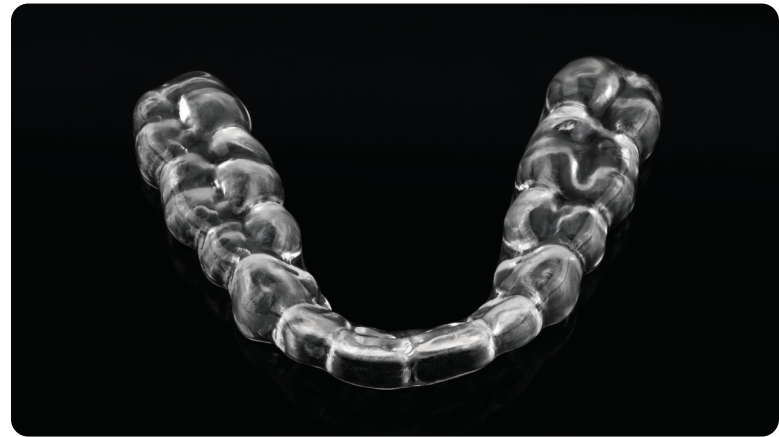
MKT-18024-Ver10-01/25

47



# ARGEN BITE SPLINTS

Argen Bite Splints are the productivity solution for every lab. Choose between Milled Bite Splints and Printed Bite Splints to suit your prescription needs. Argen's advanced milling and printing technology ensure an accurate fit.



---

## ARGEN ORTHO



## Milled Bite Splints

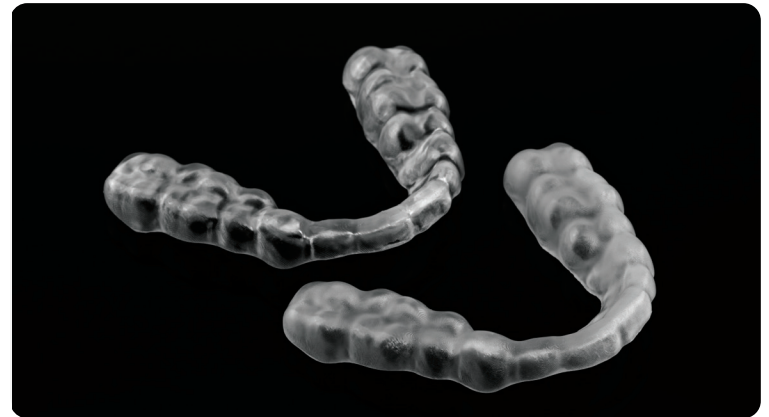
### Traditional Hard Splints

Argen's Milled Bite Splints are traditional hard splints milled from Argen's ultra-clear PMMA. These splints required no post-processing and offer the benefits of precision CAD/CAM milling. They are tough and durable and comfortable to wear.

## Printed Bite Splints\*

### Flexible Hard Splints

Argen's Printed Bite Splints are a cross between hard and soft splints. They are tough and durable like hard splints, and flexible like soft splints. Printed using FDA-cleared resin, these bite splints are abrasion and fracture resistant and not brittle.



\*Available as polished or unpolished.

**The Argen Corporation**  
 argen.com | customersuccess@argen.com | (800) 255-5524







# ARGEN CLEAR ALIGNERS

Argen Clear Aligners is a turn-key solution designed for dental laboratories to seamlessly enter the clear aligner market. Argen Clear Aligners are 510(k) cleared and offer simple, streamlined case management. Our integrated systems make it easy to order, track, and review your clear aligners order.



---

## ARGEN ORTHO

Argen Clear Aligners are made from a premium thermoformed plastic material that ensures a precise fit, ongoing force retention, and exceptional durability. Our advanced material ensures continual force for faster treatment and comfort for the patient. Argen Clear Aligners are tear and stain resistant.

- Your lab name is featured on the front of the box.
- The modular packaging accommodates as many stages as the case requires.
- The Care Kit includes a removal tool and retainer case.
- Marketing material templates are available to help you market to your doctors and your doctors market to their patients.



**The Argen Corporation**  
argen.com | customersuccess@argen.com | (800) 255-5524



MKT-18024-Ver10-01/25

51

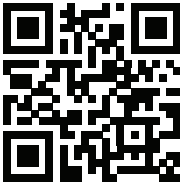
# Argen Digital Product Catalog

The Argen Corporation  
8515 Miralani Drive  
San Diego, CA 92126

argen.com | (800) 255-5524



Scan for Catalogs



Copyright © 2025 The Argen Corporation. All Rights Reserved.