

Soft Tissue Model Guidance

Design Guidance:

Argen Soft Tissue is more rigid than soft tissue applied the analog way. Therefore, it is important to keep the following points in mind:

- 1) Thin parts of the soft tissue are in danger of cracking or flaking. To avoid this, we recommend the following:
 - a) **3Shape:**
 - i) Design your soft tissue with the walls vertical (Figure A) or tapered inward at the top (Figure B). Doing this will help keep the thinnest parts of the tissue in non-critical areas.
 - ii) Design your tissue so the thinnest part (at the base) is not less than 2.0 mm thick (Figure C).
 - b) **Exocad:**
 - i) When designing, set the Gingiva Minimum Thickness to 2.0 mm.
 - ii) Adding nubs is also recommended.

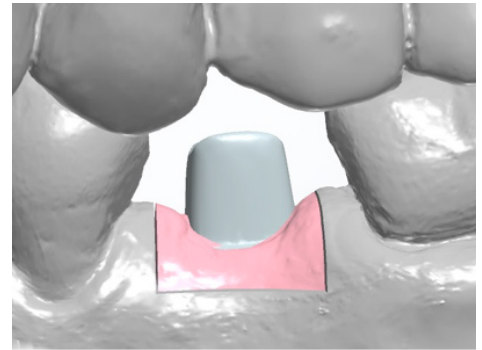


Figure A

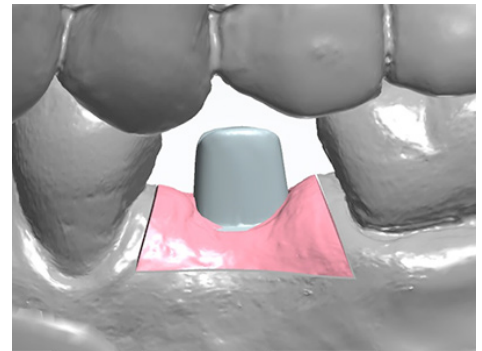


Figure B

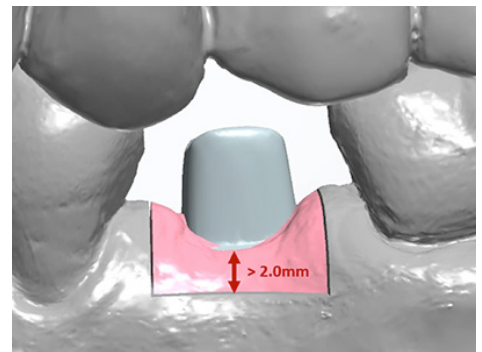


Figure C

Handling Instructions:

- 1) Do not stretch or pinch material beyond what is required to seat it in the model.
- 2) If you need to adjust the material, we recommend a crosscut carbide burr in a low speed handpiece.

Upload Instructions:

- 1) Uploading soft tissue models can be done one of two ways.
 - a) **Upload STL files only to Argen.**
 - i) Drag STL files to upload box
 1. Ensure all units have the same name.
 - ii) For any models or abutments, proceed normally.
 - iii) For the soft tissue STL files:
 1. In the product field, select Soft Tissue.
 2. Choose the span of units your soft tissue covers.
 - b) **Upload using Drag & Drop**
 - i) Drag zipped 3Shape manufacturing file to the Argen upload box.
 1. Argen's system will automatically recognize the soft tissue file and upload it accordingly.

Turnaround Time:

Soft tissue models have the same turnaround as standard Model C or Model T. Files uploaded before 3:00pm PST will be delivered in 2 business days.