

# Custom Abutment Design

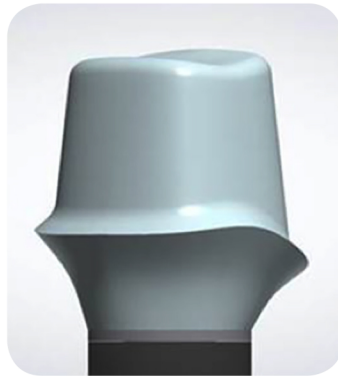
## Guidelines for Successful Abutment Designs



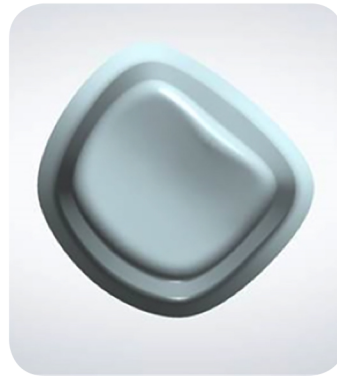
### ✓ GOOD ABUTMENT DESIGN ✓



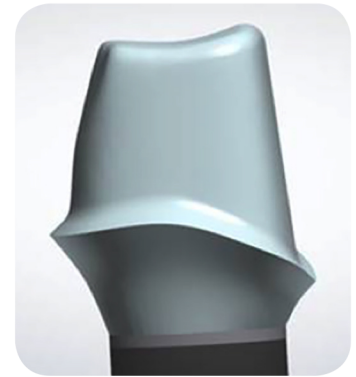
- Tapered top cap design
- Rounded and smoothed chamfer above the margin



- Rounded occlusal corners to limit drill compensation

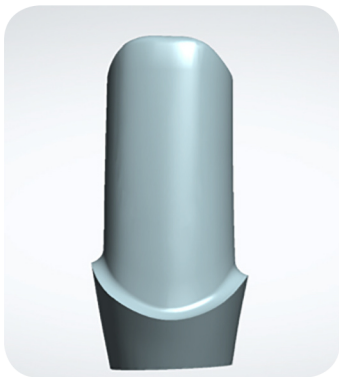


- Retentive shape to top cap for a rotation free crown

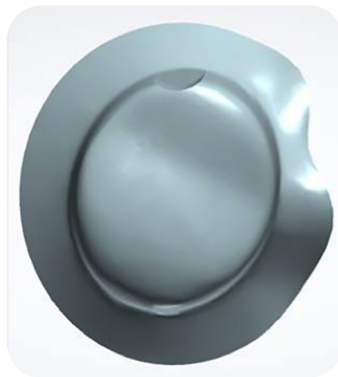


- Plane cuts with smoothed edges rather than vertical retention grooves.

### ✗ AVOID THESE COMMON ERRORS ✗



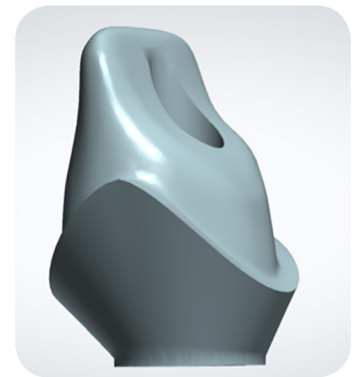
- Lack of taper in top cap
- Shallow shoulder



- Circular top cap design
- Vertical retention channel



- Sharp shoulder above margin
- Sharp angle on margin



- Built in undercut shape
- No split files over hybrid abutments

